

IN OUR TIME



DEDICATION • PORT ALLEGANY UNION HIGH SCHOOL

MARCH 1956

FOREWORD

The dedication of the Port Allegany Union High School marks a significant highlight in the History of Education in our Community. This occasion is an opportunity for all to participate in the formal delivery of the building to the School District and to become more fully acquainted with its various features by personal inspection.

The building project itself is the largest step in a series of enterprises in connection with our educational program over the years. This booklet recalls some of the historical events which have led to this memorable occasion.

DEDICATION COMMITTEE

March 19, 1956

PROGRAM HIGH SCHOOL AUDITORIUM

March 19, 1956

8:00 p.m.

- Presiding Dr. Clifford V. Jones
Supervising Principal, Port Allegany Union Schools
- Music High School Band
John Moyer, Conducting
- Invocation Rev. J. J. Cronin
- Flag Salute Led by Representative Veterans Organizations
- Star Spangled Banner Led by Mrs. June Dunn
High School Band Accompanying
- Recognition of Special Guests
- Presentation of Port Allegany Union Schools' Faculty
Albert R. Skelton, High School Principal
Clyde C. Lynch, Elementary Supervisor
- Presentation and Acceptance of Building
Raymond Viner Hall, Architect
Charles F. Boller, President School Authority
Gauin H. McCoy, President Board of Education
- Music High School Ensemble
Mrs. Henrietta Nadal, Directing
- Address Dr. Paul H. Masoner
Dean, School of Education, University of Pittsburgh
- Alma Mater Led by Mrs. June Dunn
High School Band Accompanying
- Benediction Reverend Earl B. Williams

IN OUR TIME

The History of our school is the history of our Community. Here is presented in picture and story the history of Education in our Area as we have observed it in our time. When we look in retrospect, at those days of long ago, there may be a bit of sadness prompted by a nostalgic urge to live again those happy days.

As we turn the pages in this booklet, we seem to be turning the pages of time, for upon discovering pictures of a wonderful new building we realize we have reached a new horizon in Education and can rejoice in the knowledge that our children will face the future prepared for it, and that we have seen the new tomorrow today.

"Still stands the school house by the road."

ANNIN TOWNSHIP HISTORY



An early Annin school building

The first settlements in Annin Township were established at Turtlepoint and Newell Creek about 1836 and 1840.

The first settlers, interested in educating their youth, built log school houses as they were needed. Often, a school was built for one family.

The first school in the village of Turtlepoint was constructed on the Simpson farm in 1852.

At one time, Annin Township had ten one-room schools in such locations as Rock Run, Newell Creek, Upper Two-Mile, Annin Creek, Open Brook and Turtlepoint. But all of the schools in the outlying districts have been abandoned. The districts are sending their pupils to the village of Turtlepoint.

The present school is located on a part of the Taylor property. This building is a combination of four of the old school houses. The first part was built in 1882 and was used to house the upper grades until 1921. In 1922, an addition was made to house the primary grades. This remained as a two teacher school until 1944 when the third room was added. The final addition was made to the school in 1947 when the Rock Run building was attached to it. The building was now large enough to accommodate the entire elementary school population.

The Turtlepoint School is now a part of the Union District and, with the exception of those Annin Township students who reside at Upper Two-Mile and attend the schools in Port Allegany borough, is housing the first six grades of Annin Township's school population.

LIBERTY TOWNSHIP HISTORY



The Village School, Liberty, Pa.

Eighty years ago a school board made up of five members consisting of S. C. Sartwell, president; S. W. Smith, secretary; George C. Barrett, treasurer; J. K. Moore and Frank Coleman acted for the Liberty District of McKean County.

This district consisted of eleven schools. The village school was made up of a higher department and a lower department. Coleman, Upper Portage, Middle Portage and Lower Portage, Comes Creek, Bullis, Grimes, Open Brook, Skinner and Lillibridge completed the district. There were two terms of three months each. The summer term began in May, the winter term the first of December.

These schools have remained in the same localities but their names have undergone various changes. As the population of the village increased it left the Liberty District and formed a district of its own.

In 1904 there were seventeen teachers in sixteen schools. Brooklyn had a primary and a grammar teacher.

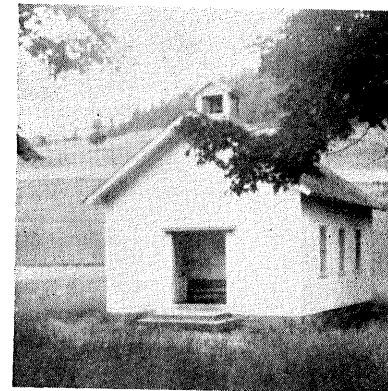
Bullis and Upper Lillibridge schools were closed in 1912. Comes Creek followed in 1913. The children from Comes were taken to Wrights, where another room was added a few years later. By 1928 several more schools had been closed. Brooklyn, Wrights and Two Mile housed most of the children.

In 1938 a Consolidated school of four rooms was built on Mill Street in Port Allegany. Mrs. Myra Guenter was the first principal of the Consolidated school. Miss Bessie Constantine was the first full time music teacher. Space was now found for a cafeteria. Hot lunches were an actual occurrence and enjoyed by a large percentage of the pupils.

The Wrights school was closed in 1945, Brooklyn in 1954.

Liberty Township and Port Allegany formed a jointure in 1952. Three class rooms, a kitchen and an all purpose room were added to the Consolidated school. The all purpose room is a combination cafeteria, gymnasium and projection room.

PLEASANT VALLEY TOWNSHIP SCHOOL HISTORY



Upper Sartwell Creek

Before the 1860's, the three by six mile area which is now Pleasant Valley Township constituted the western half of Clara Township. During the 1860's, Clara Township relinquished its western half to form the new Pleasant Valley Township. Reasons for the establishment of Pleasant Valley Township are not explained in the records of this period which are rather vague and fragmentary.

By 1869 there were still no regular school houses in the township. During the meeting of March 22, 1869, the Board of Education action included the leasing of one-half acre of land (for \$20) for school purposes and the dividing of the township into four attendance districts.

By 1869, there was a designated school term of two months, in Attendance District 1 and four months in District 2. The beginning of the term was usually November.

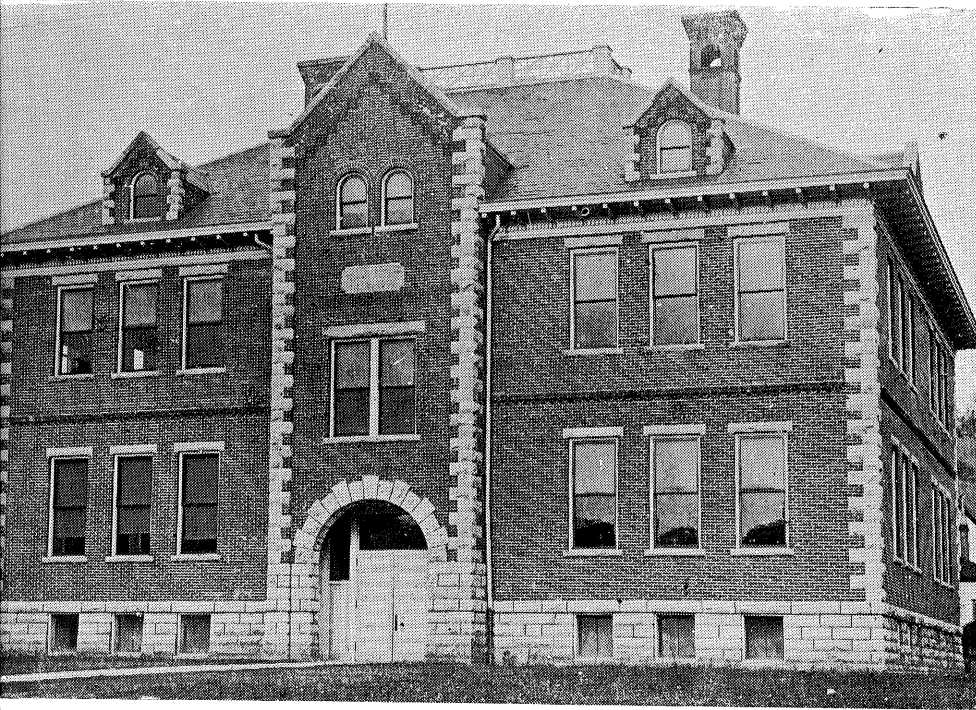
In 1870, the school tax was 13 mills, while the teachers' salaries during the period of 1870 to 1890 were 12 to 30 dollars a month.

School No. 1, known as the Meacham School, located on the E. E. Blood farm, was closed in 1920. School No. 2, known as the Weimer School, was built on one-half acre of land leased from Elmer Denning, December 31, 1885. This school was closed in 1940. School No. 3, the Austin School, was built by Isaac North for \$140, on land leased from Mr. Benjamin Hayes on November 1, 1873. A second Austin School built in 1892 by J. P. Reed for \$328 was closed in 1909. School No. 4, The Shaytown School, was built in 1888 by Wilson McDowell for \$394.70, was closed in 1941.

After the Board had closed the Meacham School in 1920, the elementary pupils were transported to the Weimer School and the secondary students were taken to Roulette High School. In 1937, the high school pupils were sent to Port Allegany High School. In 1941, all pupils were sent to Port Allegany, the secondary students attended the high school on Arnold Avenue and the elementary students attended the Liberty Township School. In 1947, all students were assigned to the Port Allegany borough school, which is now a part of the Union.

In 1954, Pleasant Valley Township voted to become a member of the Port Allegany Union School District which was officially formed in July, 1955.

BUILDINGS DESTROYED BY FIRE



MAIN STREET SCHOOL BURNED JANUARY 29, 1924



PORT ALLEGANY SCHOOL HISTORY

For the past one hundred and twenty-one years, boys and girls of the Port Allegany area have been receiving instruction in the various schools of this vicinity. The first pioneer school of this locality was established under the common school law in 1834 and was taught by Elizabeth Manning. The first school house was erected in 1834 and was the only school building for many years, employing one teacher. As the settlement increased in population and number of pupils, it was found necessary to erect a larger school building.

Following the Civil War, a school was constructed on East Mill Street in which three teachers were employed. This building was a large wooden structure two stories high and was erected in 1868. It continued to be Port Allegany's only source of learning until 1887 when the structure was totally destroyed by fire.

After the destruction of the Mill Street School, arrangements were made for a new center of instruction, so accordingly a site was purchased from S. W. Smith for the new structure. In a short time, the brick building was erected at the corner of Broad and Church Streets. With the growth of the town in the early nineties, this school became filled beyond capacity and again the need for more facilities in education became urgent. The school authorities ordered an addition to the Church Street building at that time.

Within a very short time, a lot was purchased on Main Street from Mrs. S. J. Sartwell and plans were adopted in 1905 for a new school at this site. At the completion of the Main Street building, which was designed by the late Walter J. Hall, father of R. V. Hall, it was declared by the State Inspector to be the best school structure in the state regarding ventilating and heating arrangements. The number of pupils increased until the edifice contained two hundred and fifty pupils occupying eight classrooms with indications of an overcrowded condition in the near future. In 1912, the State Board of Education granted the High School the rank of first class.

On January 29, 1924, the beautiful Main Street building was totally destroyed by fire thus causing a second disaster to the Port Allegany schools. After this unfortunate circumstance occurred, it was the general consensus of opinion that a new structure be erected on Arnold Avenue, which was to be used as a high school. The Church Street School was then converted into a junior high and grade school building. Many pupils were taught in the Port Allegany Borough in these two structures until a third disaster was the fate of our community. The Church Street building was razed completely by the fire in 1952. Our pupils were then taught in Sunday School rooms of the various churches until a beautiful addition, containing 8 rooms and a cafeteria, was completed at the Arnold Avenue building.

The Arnold addition gave some relief to the elementary school but the high school was so over crowded that classes were being held in the Smith House and garage as well as the Public Library.

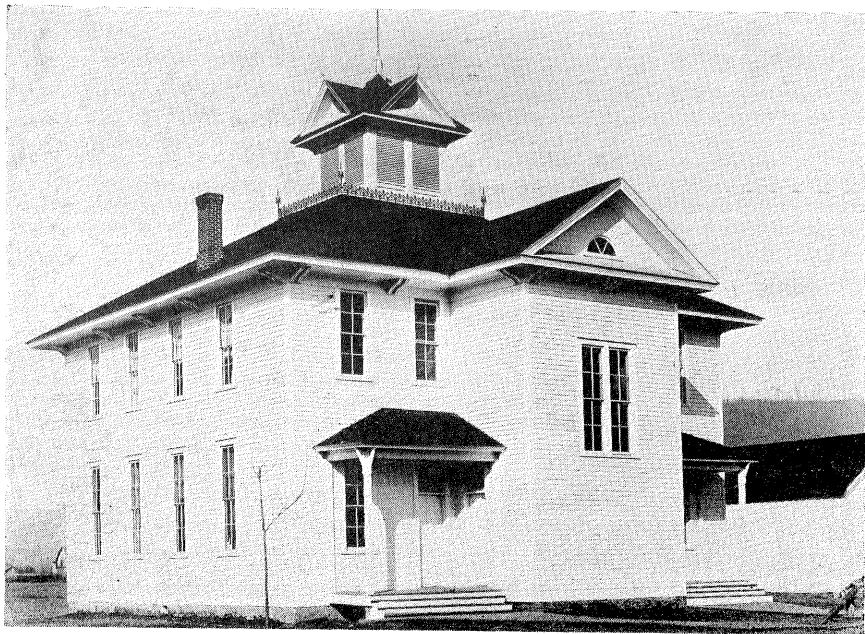
Port Allegany, which has always met its problems in a positive way, decided this time was right to give its boys and girls the advantage of the best education possible in the most modern school plant obtainable.

The modern Junior-Senior High School Building, which we are now dedicating, was actually begun in the spring of 1954 and completed early in 1956. Classes were held in the building for the first time on September 19, 1955.

Our school area now serving the boys and girls in Annin Township, Liberty Township, Roulette Township, Pleasant Valley Township, and Port Allegany Borough, is justly proud of its fine new high school. Our citizens can boast of one of the best school plants in the state.

The construction of the new high school building not only made adequate facilities for the high school but gave us one of the best equipped and housed elementary schools in this section of the state.

ROULETTE SCHOOL HISTORY



The Pride of Roulette at the Turn of the Century

As alumni of the Roulette High School pass through the corridors of the newly dedicated Port Allegany Union District Junior-Senior High School, they feel the pride of accomplishment in providing their boys and girls with a most modern school plant. Here the youth of Roulette, and the entire area, will have a chance to feel the joy of youth, the hope of youth, and the satisfaction, upon graduation, of a task well done.

But the Roulette graduate will also, in a brief nostalgic moment, recall with gladness the many happy days spent in the Roulette High School. A few will no doubt remember the first graduating class of eight members back in 1905 when A. B. Benn was Principal. The school of Mr. Benn's day offered a three year course which was continued until 1922, when the student body numbered 76 and the course was extended to a regular four year curriculum from which the graduates could enter college. The four year course was launched in the fall of 1923 with Professor L. L. Smith, the late Miss Anna Fitzsimmons and Athalia Kline as teachers.

Roulette may always be proud of its fine academic standing as well as its loyal faculty where intimate contacts between students, teachers, and parents highlighted the life in the community. This fine school was the envy of many other larger schools in the field of athletics, having produced championship teams in baseball and softball. Baseball was probably king in the village, the teams having won four championships in six years during the thirties. Basketball was more limited in scope but for a number of years both boys and girls teams represented their Alma Mater. After the flood of 1942, this sport was discontinued as the playing floor was ruined. The best seasons for track were the years of 1927, 1928, and 1929.

Extra curricular activities in the later years of the high school included a history club, a hobby club, a glee club, a sportsman's club, and the band.

The building, which housed the High School and is now used as an elementary school, was built in two sections. The first, or west part, was built in 1889 and the so

Continued on Next Page

Port Allegany Schools Face The Challenge of Twentieth Century

By the late twenties, an era of rapid technological development had made itself felt in the educational program throughout our country. Public education was expanding and adopting a policy of service for every boy and girl. Improved roads and advances in automotive transportation made it much more possible than ever before that nearly every boy and girl could have increased opportunities in education.

Realization of the need for more and better education, led to an increasing amount of research to determine the best type of school program. During the next few years, much progress was made in determining standards for good educational programs, physical plant facilities necessary to carry them out, and the sizes of school systems necessary to have good programs at a cost which the taxpayers could afford.

In Pennsylvania, the legislature decided that the jointure and then the union were the proper steps to follow in establishing the size attendance areas which our state studies had shown were necessary (minimum of 1600 pupils per school system). In 1952, the first active jointure was formed in the Port Allegany area, comprised of Port Allegany Borough, Liberty Township and Pleasant Valley Township. In November 1953, the people of Port Allegany Borough and Liberty Township voted to become a permanent union school district. In July of 1954, a new jointure was formed consisting of the new union district, Roulette Township and Pleasant Valley Township. The present union school district was a result of the November 1954 election whereby the people of Annin Township, Liberty Township, Pleasant Valley Township, Port Allegany Borough and Roulette Township went to the polls and approved the formation of the present union school district. The total school enrollment is now approximately 1500 pupils; a very beneficial educational program is being provided for all the youth of the community; and we are capable of providing the school buildings which our children deserve.

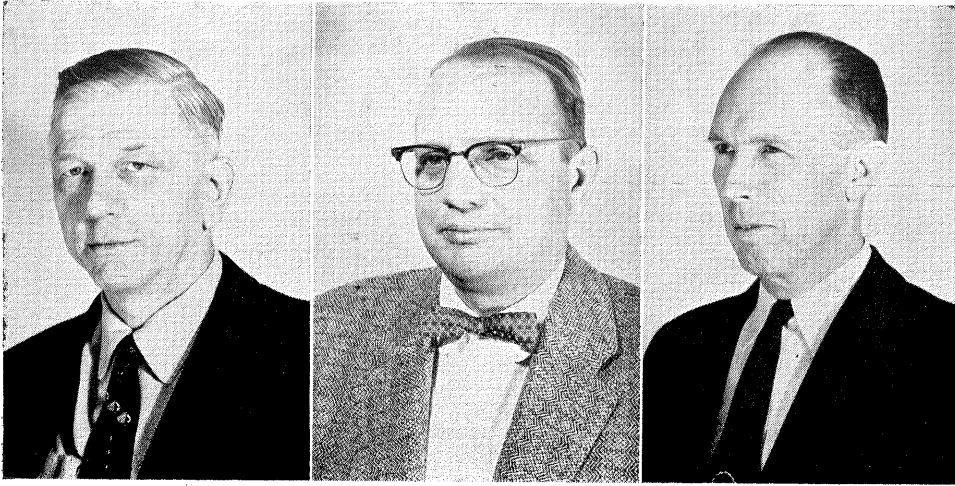
Continued from Previous Page

called new part was added in 1904. In 1950, an extensive program of renovation was carried out in which new heating stoves were added and the building beautifully redecorated.

A two room elementary building of brick construction was added to the system in the early thirties. This building, no longer needed as a school, is now used as the Roulette Public Library, and offers the people of the community not only a fine library, but also the chance to boast of a physical plant most unique in a town the size of Roulette.

The loyalty of the alumni is indicated by the active alumni association which has functioned since 1933. The first president was Mrs. Selma Siebert while the first alumni banquet, with 74 present, was held during the Christmas holidays of 1933 with Ivan Witter as toastmaster. This annual banquet has become a big affair in Roulette social life and will continue indefinitely to unite old friends and revive fond memories.

Port Allegany Union District School may well be proud of a "parent" school with such traditions and asks the support of its alumni in our new undertaking.



Gauin H. McCoy James H. Isherwood, Jr. Dr. A. H. Baker

LEADERS IN PLANNING

During the early days of the unification of the present school attendance area and the building program, James H. Isherwood Jr. served as President of the Port Allegany Area Joint School Board. Dr. A. H. Baker served as Chairman of the School Building Committee throughout the planning and construction period of the building program. Gauin H. McCoy is serving his second term as President of the Port Allegany Union School Board, which is now charged with the completion of the Junior-Senior High School project.

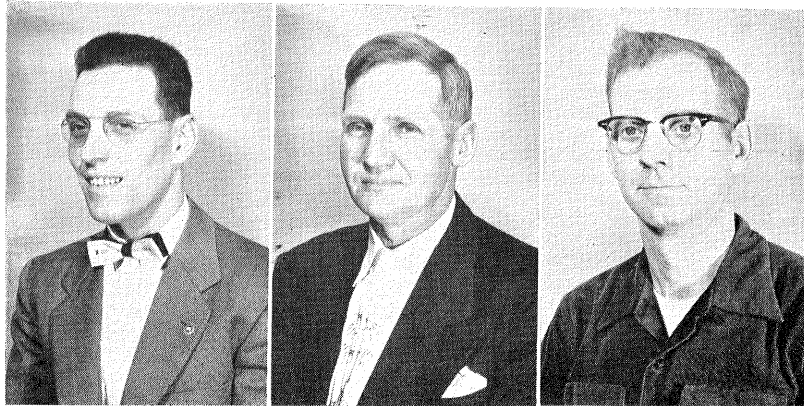
A thorough study conducted by the Board of Education several years ago revealed the acute need for a well planned building program for the Port Allegany Area. Considerable time was expended by the Building Committee and the Board in further study and consultation with competent consultants and State officials regarding the formation of a practical plan which the local area would be able to finance and which would lead toward fulfillment of the educational program which the people of the area deserve and want. The alterations and additions to the Liberty School and the Arnold School were the first tangible results of this planning. The new Union High School building now being dedicated represents the next big step in providing the best possible educational opportunity for our boys and girls.

THE BOARD OF EDUCATION



Top row: Mrs. Myrtle Rennells, Neil Greenhill, Garth Nelson, Paul Ostrander. Second row: Eleanor Michelitsch, Henry Tauscher, Vice President; Merle Dunn, Ralph Burdick. Third row: Robert Fessenden, Mrs. Dorothea Goodrich, Clayton Larson, H. Michael Herger. Bottom row: Mrs. Leah Lewis, (non-member) Secretary; Daniel Lane, Treasurer; Dr. Arvid H. Baker, Gauin H. McCoy, President; James H. Isherwood, Jr.

RETIRED MEMBERS OF BOARD
WHO SERVED DURING CONSTRUCTION



Glenn P. Klein Harold Baker Joseph R. Brown
Mrs. Myrtle Baum Theodore Pearson Elton Carlson Charles Crowley
Mrs. J. B. Price Rayburn Weimer Donald Kanally

SCHOOL BUILDING AUTHORITY

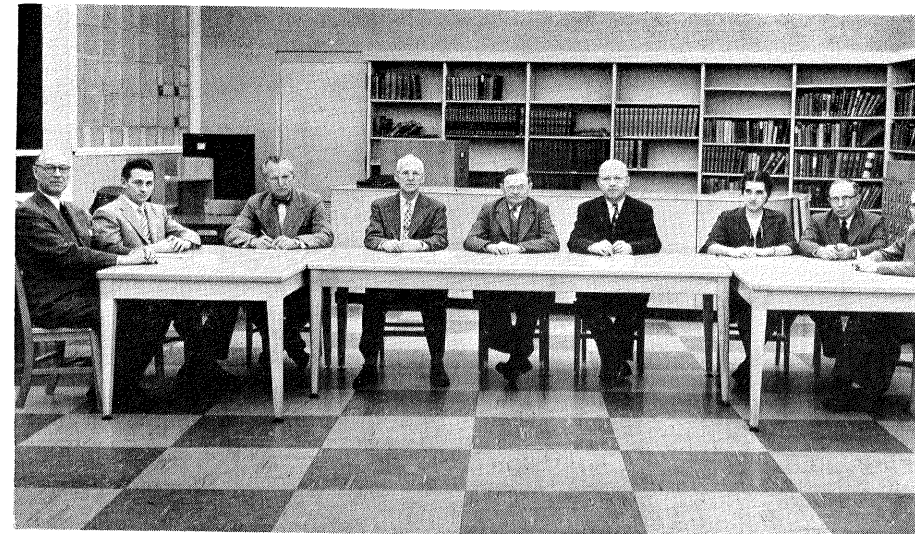
When the new school building program was instituted, several years ago, type of financing the huge program was necessary, as the taxing powers of the di was not sufficient to carry the load. Accordingly a school authority was formed.

The members of the authority at present are C. F. Boller, president; Guy Nelson, vice president; George Nadolske, treasurer; James A. Carlson; Philip K Pleasant Valley; John Convey of Roulette and George L. Carlson of Turtle Mrs. Leah Lewis is secretary of the board, and E. G. Potter attorney.

The purpose of the authority is to issue bonds for financing the school build advertise for bids and let contracts, and have supervisory charge of the constru The real estate upon which the new construction is done, is deeded to the auth who are the owners of the property until all the bonds are paid, when it again bec the property of the school board. Payments of the bonds and interest are made rentals paid by the school board to the authority. State appropriations account large part of the rentals.

The First National Bank of Port Allegany is trustee for the Authority, handles the payments of the bonds and the interest coupons. Owners of the Port gany school bonds are scattered over a large part of the United States. Already \$ of the bonds have been paid, with more coming due on the first of next July.

The Authority has issued three series of Bonds, \$250,000 for the additions t Arnold and Liberty Buildings; \$882,000 for the construction of the Junior-Senior school, and \$90,000 for a six room addition to the high school.



Left to right: E. G. Potter, Philip Kio, Architect Raymond V. Hall, James A. Carlson, C. Boller, George Nadolske, Mrs. Leah Lewis, Guy M. Nelson, John Convey. Absent member: G. Carlson.



CLIFFORD V. JONES

B.S. in Ed., M. Ed., Ed. D.

Supervising Principal

Port Allegany Union Schools

SUPERVISING PRINCIPAL

PORT ALLEGANY UNION SCHOOLS

The educational program offered in the Port Allegany Union Schools embraces the philosophy that every boy and girl shall have an opportunity to develop to the full extent of his ability.

A basic aim of our curriculum is that every child shall be provided an optimum of opportunity for development not only in the traditional three R's, but also in the elements necessary for happy community living.

The school program is designed to provide the best possible preparation for the college bound, exploratory experience in career planning, and vocational training for those so suited as well as guidance, health service, and citizenship education for all. This program requires classrooms that are equipped in a manner that will facilitate successful operation. It mandates a professional staff which is dedicated to the needs of youth, excellently trained in their professional assignments, sensitive to the laws of learning, cognizant of the individual differences existent among children as individuals, and aware of the necessity for common school-community goals.

The type of educational program offered in the Port Allegany Union School District requires school facilities which provide a setting wherein boys and girls may receive their schooling under conditions that are pleasant, comfortable, safe, and healthful. It requires buildings which will allow maximum return in benefit to the child and provide him with full opportunity for an education that will harmonize with today's social and economic setting.

The new Port Allegany Union High School now being dedicated stands as evidence of the fact that the people of the Port Allegany Union School District do desire the best possible educational opportunity for the children of the area.

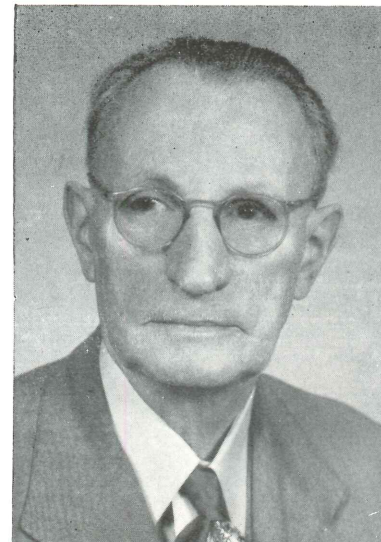
THE BUILDING

The philosophy of education embraced by those most directly concerned at both state and local levels, and the constantly increasing number of children included in the attendance area covered by the Port Allegany Union School District, combined to indicate a drastic need for greatly expanded school plant facilities. Exhaustive preliminary studies of existing school buildings resulted in alterations and additions to the Mill Street School and the Arnold Avenue School to make them suitable for a larger number of elementary school pupils. This was the initial move in the desired direction. The next step in the over-all program of expansion of school plant facilities was the construction of a new Junior-Senior High School Building; with the realization that future building planning will require careful study of the needs in the out-lying areas as related to the building program currently underway.

The accompanying illustrations indicate some of the features of our new Junior-Senior High School Building. The plan on page 18 is organized to take maximum advantage of the outstanding site selected, and developed to adequately serve basic educational needs—as well as education and recreation purposes. As a desirable result the building offers an opportunity for use under the broader concept of year-round community service.

The specialized facilities serving the several areas of instruction are planned to meet modern concepts of education to a marked degree, with due attention to the probability of future variations in educational methods.

Materials and construction techniques were selected with a view toward combining moderate first cost with reasonable maintenance problems in service. This procedure resulted in a remarkably low unit cost of construction, as may be seen by comparing the costs on page 31 with other contemporary schools of similar size.

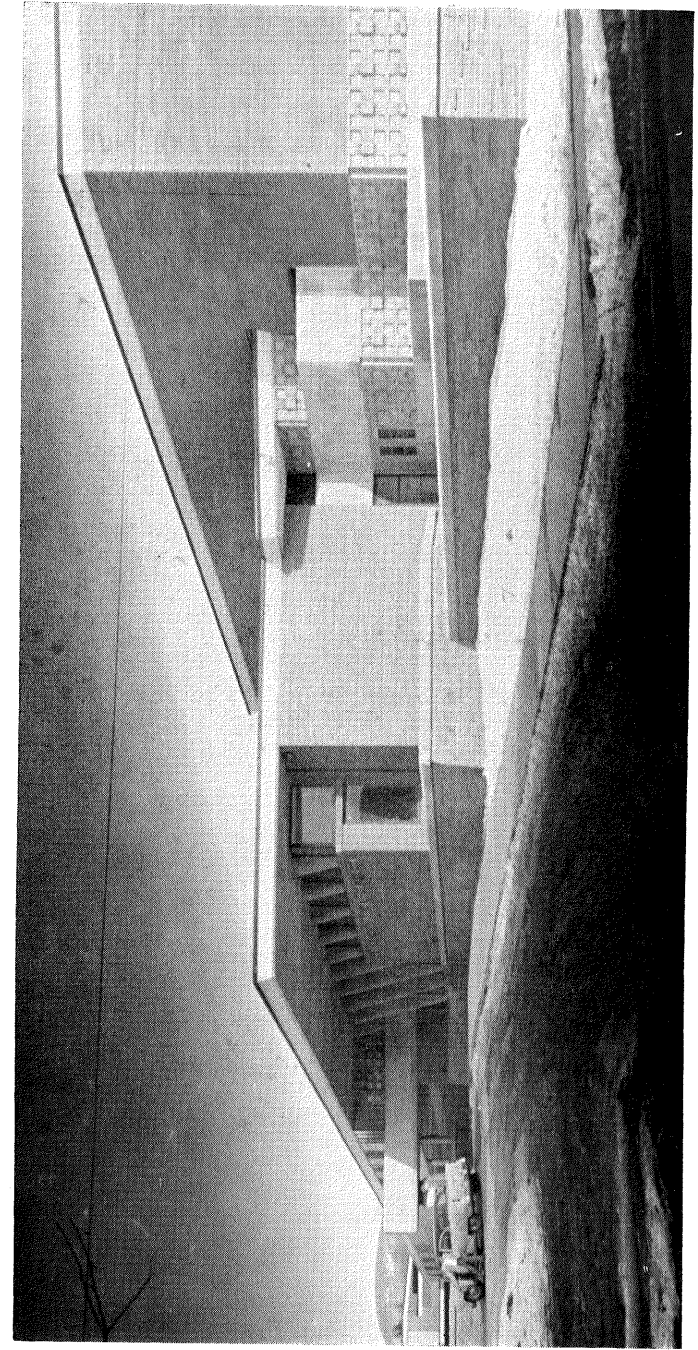
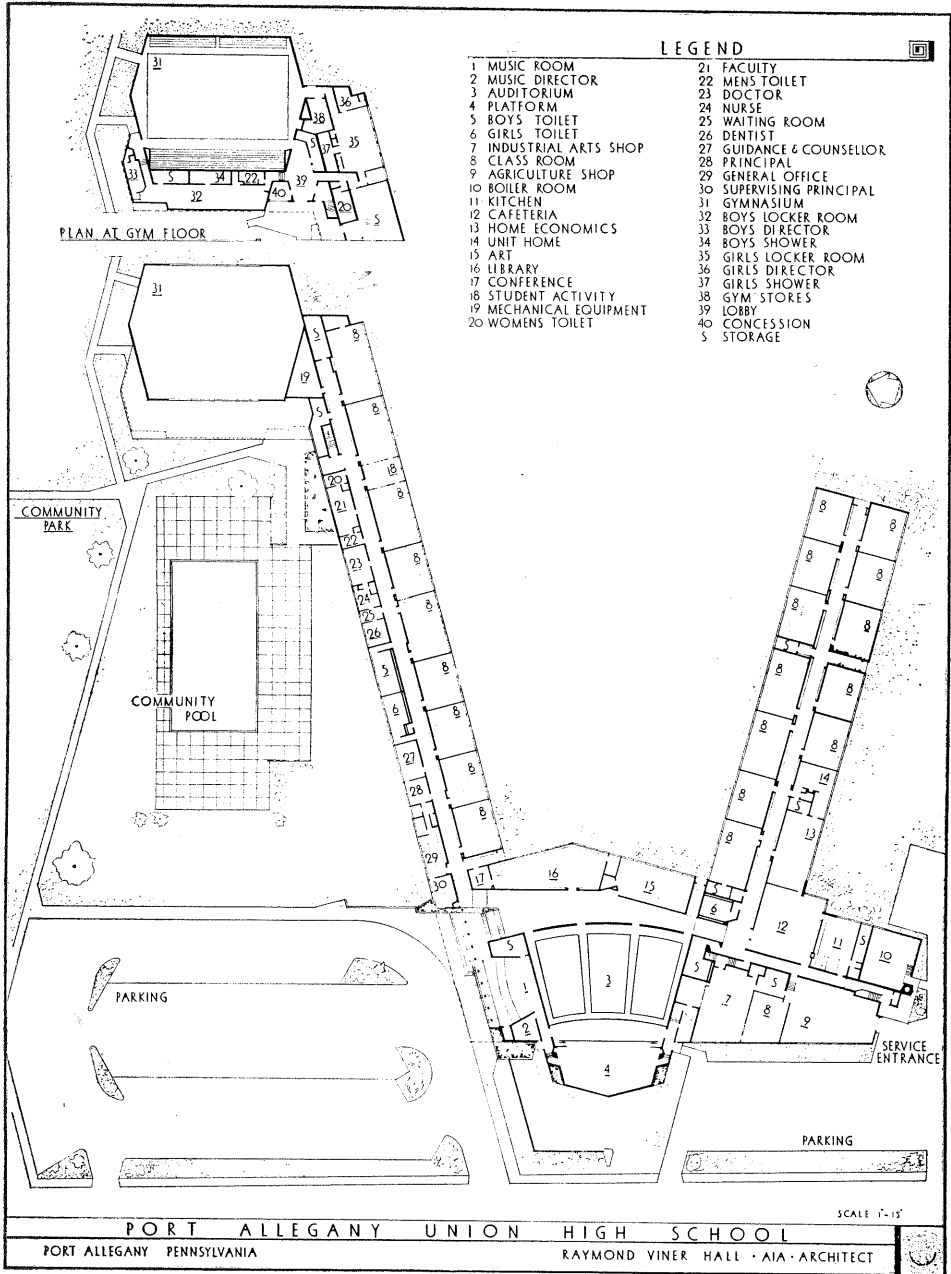


FRED N. HARDY

Supervising Principal

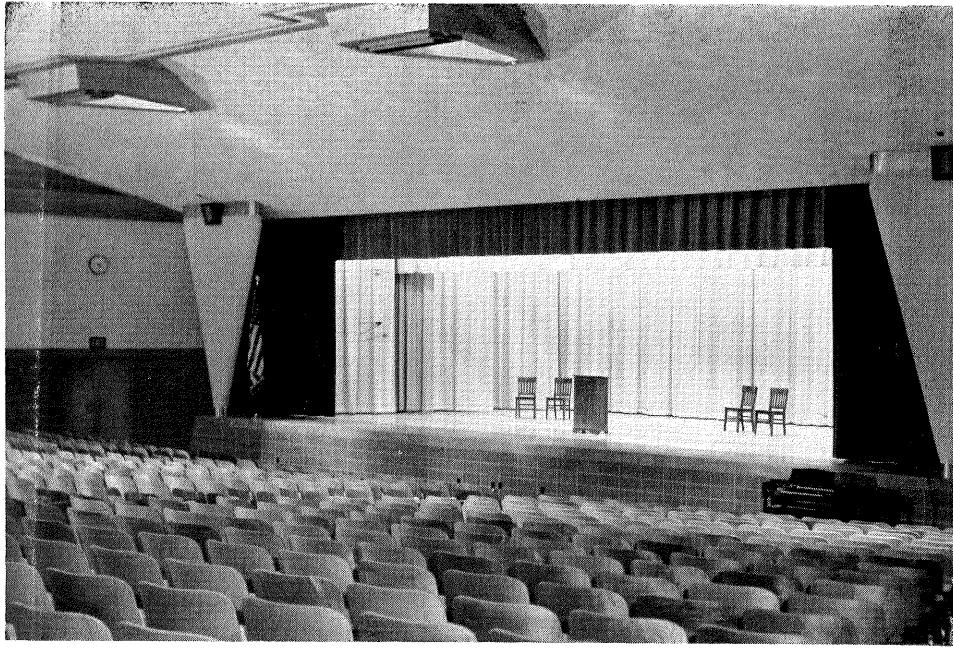
of Port Allegany Schools

1930-1953



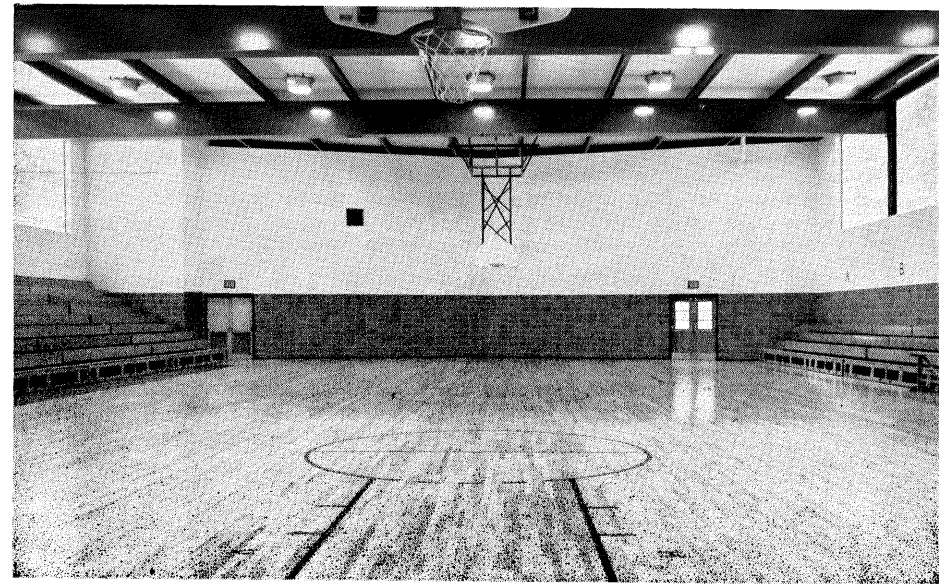
HIGH SCHOOL ENTRANCE

A view of the partially completed entrance to our school, without the projected landscaping in place. All those who enter or leave the building have access from or to their vehicles under cover.



THE AUDITORIUM

More than 800 spectators may enjoy assemblies, educational movies, plays, musicals, and programs of many varieties. Usable for both school and public functions.



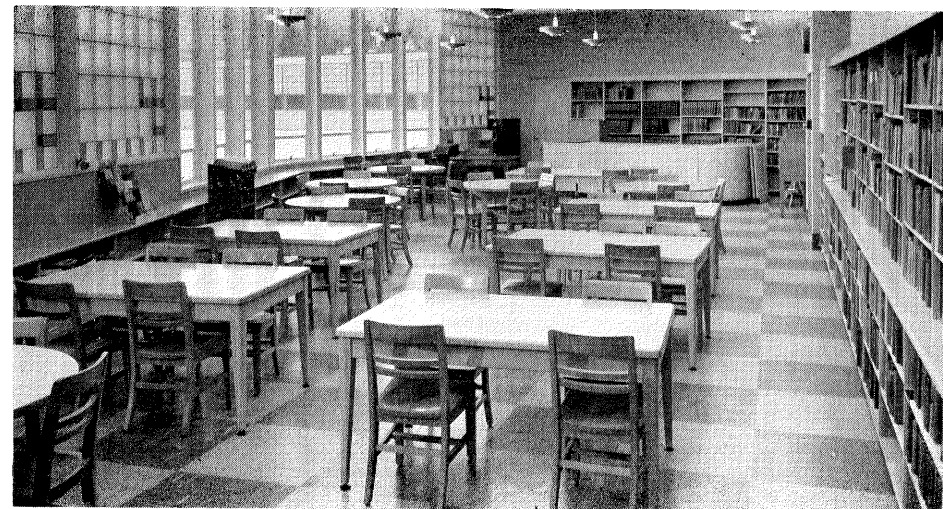
GYMNASIUM

This spacious center for physical culture and sport activities may also be used for school dances and similar functions. Adjacent locker rooms are usable by the park swimming pool bathers in summer.



HOMEMAKING

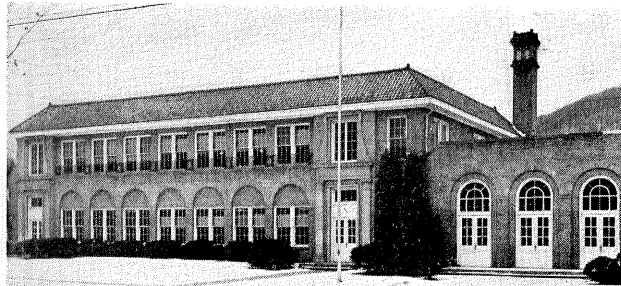
This is a corner of one of the rooms provided to facilitate instruction



THE LIBRARY

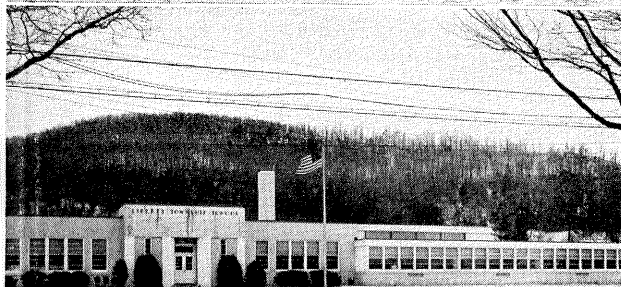
Here the student has access to an ever increasing body of human knowledge. It is a place to quietly search for needed facts, with the helpful

ELEMENTARY SCHOOL BUILDINGS



ARNOLD SCHOOL

15 classrooms, Auditorium, Health Room, Gymnasium, Cafeteria, Office of Elementary Supervisor.
Mr. Peter Pelegrino, Principal



LIBERTY SCHOOL

7 classrooms, Health Room, Cafeteria, All-Purpose Room
Mr. John Duespohl, Principal



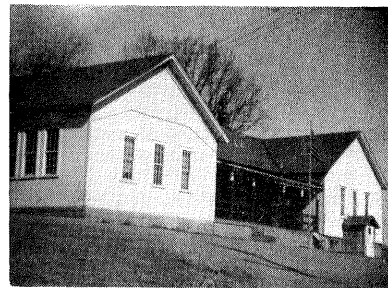
ROULETTE SCHOOL

8 classrooms, Cafeteria
Mr. L. L. Smith, Principal



TURTLEPOINT SCHOOL

3 classrooms, Health Room, Play Room, Cafeteria
Mrs. Armina Knight, Principal



ADMINISTRATION

Clifford V. Jones, Supervising Principal
Albert R. Skelton, High School Principal
Clyde C. Lynch, Elementary Supervisor
L. L. Smith, Building Principal

John Duespohl, Building Principal
Peter Pelegrino, Building Principal
Armina Knight, Building Principal
Forrest Watkins, Guidance Director

TEACHING PERSONNEL

**Anderson, Aralaine
Baker, Berneta
Bates, Edison O.
Blauvelt, Irva
Brown, Roberta
*Cawley, Marcella
Cherrington, A. E.
Christensen, Robert
Dalton, Ruth
Dann, Roland
Dunn, June
Fleming, Florence
Gamble, Cecil
Greenhill, Mary
Gillen, Loraine
Hackett, James
Hancock, Edythe
Hermanson, Marie
*Hitchcock, Rena
*On Leave

Hooley, Anna Marie
Kauffeld, Marie
Keltz, Catherine
Kennedy, Florence
**Knowlton, Imelda
Lesslie, Anita
Licastro, Rose
Lynch, Esther
Maynard, Helen
McCoy, Vivienne
McFarland, Martha
McLafferty, Beula
McLatchie, Naomi
Michelitsch, Helen
Moyer, John
Nadal, Henrietta
Nadolske, Hanna
Nichols, Gordon
Nordstrom, Ina

Poole, Raymond
Press, Marilyn
Rackish, Frank
Razey, Grace
**Reeder, Lena
Shelley, Marie
Smith, Anna
Stromberg, Robert
Swanson, Jean
Taylor, Dora Jane
Tronetti, Margaret
Tubbs, Marguerite
Wandover, Harriet
Warren, Shirley
Watkins, Emily
Watkins, Leslie
Wennerstrom, Ila
Wertz, David
Wilcox, William

**Substituting For Teacher on Leave

OFFICE PERSONNEL

Henning, Marjorie, High School Secretary
Johnson, Wava, Elementary School Secretary
Lewis, Leah, School Board Secretary
Stout, Beulah, Administrative Secretary

MAINTENANCE & CUSTODIAL PERSONNEL

Baker, Harold, Chief
Caskey, Fred
Gallup, DeAlton
Gallup, John
Lampe, Mrs. Edwin

Lampe, Edwin
Lewis, Lawrence
Murphy, Pat
Nelson, George
Nystrom, Eric

Rines, Charles
Rittburg, Ed
Tronetti, Jim

CAFETERIA PERSONNEL

Price, Aralene, Supervisor
Burdick, Ruth
Cochran, Frances
Elder, Edythe
Hermanson, Louise

Painter, Ida
Scanlon, Orrie
Siebert, Selma
Stephens, Verna
Tronetti, Maude

Wetmore, Olive
Nelson, Esther
Greenhill, Wilma

BUS CONTRACTORS

Baker, Fred
Cox, Zera
Crowley, Dan
Goodrich, Ray

Larson, Ellery
Mantz, Howard
Pinchock, Andy
Strait, Bernard

Stravino, Joe
Rennells, Harold
Pearsall, John



PORT ALLEGANY UNION SCHOOLS — FACULTY — 1-10-56

Front row (left to right): Anderson, Reeder, Knight, Duespohl, Lynch, Jones, Skelton, Smith, Pelegriano, Warren, Hooley, Kennedy. *Second row:* Hermanson, Razy, Blauvelt, Smith, Fleming, McFarland, Nadolske, Gillen, Michelitsch, Lynch, Lesslie, Baker. *Third row:* Dunn, McCoy, McLafferty, Swanson, Shelley, Tronetti, Chambers, Tibbs, Dalton, Taylor, Press, Nadal. *Fourth row:* Kauffeld, Hancock, Maynard, Knowlton, Greenhill, Brown, Nordstrom, Licastro, Watkins, Wandover, Cawley, Wennerstrom. *Fifth row:* Wertz, Christensen, Dunn, Keltz, McLatchie, Hackett, Moyer, Nichols, Watkins. *Last row:* Poole, Bates, Rackish, Cherrington, Stromberg, Gamble. *Absent teachers:* Leslie Watkins, William Wilcox, Rena Hitchcock.

SCHOOL TEACHERS 1834-1956

Port Allegany Union School District

The following men and women, through their efforts in the classroom, have molded the lives of the people in our community.

"No teacher is forgotten who truly gives his life for Youth, through them he serves and lives."

A

Abbey, Lois Hanna
 Adams, Minnie Walton
 Akeley, A. P.
 Alden, Viola Miller
 Alderfer, C. J.
 Amidon, H. C.
 Amidon, Mrs. H. C.
 Anderson, Anne Orlin
 Anderson, Aralaine Wagstaff
 Anderson, Lucy Huggler
 Anderson, Mildred
 Antonson, Genevieve
 Armstrong, Bessie E.
 Armstrong, Lena
 Atkins, Bertilla
 Augustine, Foster
 Austin, Ida Wilson
 Aylesworth, Mary

Bard, Mina Dolley
 Bardt, Delancy
 Barkus, Mabel
 Barnes, A. E.
 Barr, Eva
 Barr, Lula
 Barrett, Lettie
 Barrett, Nellie
 Bartoo, DeForest
 Bates, Edison O.
 Beck, June Rose
 Becker, Eleanor Rumsey
 Bell, Carrie
 Beltz, C. M.
 Benn, A. B.
 Benn, E. Merle
 Berg, Beatrice Mills
 Berg, Correne
 Berkenstock, Frank A.
 Bess, Geneva
 Bielawski, Agnes

Bronson, Esther McLaughlin
 Brooder, Rena
 Brown, Flora
 Brown, Helen
 Brown, Katie
 Brown, Melva Burleson
 Brown, Roberta
 Brownlee, Josephine Welsh
 Bull, Hattie
 Bull, Naomi
 Bull, Oma
 Bullock, Gerald
 Burdick, Alice Carlson
 Burleson, Melvina Thoren
 Burr, Mrs. William
 Burt, Monta
 Burt, Tena
 Burt, Teva
 Butler, Harvey
 Button, Leona Culver

B

Bailey, Catherine
 Bailey, Frank
 Bailey, Ida Fisher
 Baker, Bernita
 Baker, Cecilia Snyder
 Baker, Howard
 Baker, Howard J.
 Baker, May Hall
 Baker, Susan Merritt
 Baldwin, Addie Walter
 Baldwin, Genevieve
 Balmoos, John K.
 Balthaser, Barbara
 Barber, E. M.
 Barber, Mary
 Bard, Maude Adams

Bishop, Carrie
 Bishop, Eugene
 Bitner, J. W.
 Blauvelt, Irva Stillwell
 Bottorf, Dean
 Bowman, Florence
 Boyd, Barbara
 Boyd, Elizabeth
 Boyd, Florence
 Bradley, Mary
 Bratz, Martha
 Bray, Margaret
 Brechtel, Violet Hiller
 Breit, Elizabeth
 Brenckman, Lillian
 Briggs, C. F.
 Brennan, Kate
 Brogan, Margaret

C

Caffo, Ruth Lincoln
 Cain, Anna
 Camp, Jessie M.
 Campbell, Esther Grinolds
 Cannon, Leona
 Cantwell, Mary
 Card, D. L.
 Card, Grace
 Card, Melvin
 Card, M. R.
 Card, Norman
 Card, Warren
 Carlson, Anna
 Carlson, Cora Holmes
 Case, Agnes Austin
 Case, Mrs. Donald

Caskey, Ione Nelson
Casperson, Ida
Cassidy, Francis
Cassingham, Almeda
Larabee
Catlin, Louise Smith
Catlin, Nellie M.
Catlin, Vada Coleman
Cauley, Marcella
Cawley, Tillie
Chambers, Mrs. Edna S.
Cherrington, A. E.
Childs, Harold
Chitester, Albert
Chrisman, Nettie
Christensen, Robert
Clark, Iva
Clark, Marian
Clark, Ned
Clark, Otto
Clark, Rose Bosnick
Clay, Ada
Coats, Justina
Cobb, Diana
Cole, Leon
Cole, Mary Jane
Cole, Ward
Coleman, Eliza
Condrey, Kate
Cone, Blanche
Cone, John
Cone, Lottie
Connor, Dean
Connor, Paul
Considine, Kitty
Constantine, Bessie
Cooley, Grace
Cooney, Emma
Cooper, Edith
Cooper, Constance Tubbs
Cornell, Merle
Corwin, Myra
Cory, Edith
Cory, Vivian
Costello, Gertrude
Cotton, Veda
Coyle, Rose
Crandall, Allen
Crawford, Thekla
Cray, Genevieve Farner

Cronk, Minnie
Crowley, Angeline
Crowley, Ella
Crowley, Eulalia
Crowley, Frank
Crowley, Mary
Crowley, Rosa
Culver, Violet
Cummings, Genevieve
Cunningham, Mary

D

Dadio, Eva
Dalton, Helen Cavanaugh
Dalton, Nellie Bishop
Dalton, Ruth Taylor
Dann, Roland
Dardenne, Pearl Goding
David, Ruth Howe
Davidson, Winifred
Davis, E. J.
Davis, Nellie
Dean, Eunice
Decker, Ralph R.
Depew, Della
Dexter, Emma Cotter
Dibble, Alford
Dibble, Dorothy
Dick, Nellie
Dickerson, Mariam Eastman
Dillon, Bessie C.
Domeny, R. H.
Doll, Christine Anderson
Donahue, Ludmilla
Downs, Minnie
Drake, Louva
Duesphol, John
Dunn, June Place
Dunnigan, Mary
Durham, Mary Doolin

E

Eastman, Ethel Meacham
Eddy, Lorinda
Eddy, Mattie
Edgar, Daisybelle, M.
Edgreen, Flossie Parker
Edgreen, Ruth Owens

Eilingsfeldt, Matilda
Eimer, Essie
Eimer, Leona
Elder, Myrtle
Elliott, Sara
Ellis, Susie
Ellis, Violet
English, Dean
Entz, John A.
Ernst, Anna
Ernst, Stella Frutiger
Everette, Eugenia
Eyler, Ellen Anderson

F

Falk, Ruth
Fahlman, Ruby
Faso, Peter
Fay, Ann
Faegley, Catherine
Fenley, Pearl
Fessenden, Anna Brownlee
Fessenden, Mariella
Fessenden, Myrtle
Fetterolf, Howard
Fetterolf, Julia Lillibridge
Field, Alberta
Finch, Leona Luby
Finch, William
Finley, Pearl
Finn, Edna
Finn, Rae
Fish, Myra H.
Fisher, Alice Bradley
Fitzgerald, Charles
Fitzgerald, John
Fitzsimmons, Anna
Flanders, Florence Strickland
Fleming, Florence Chastain
Flynn, Katherine
Foley, Mae
Foote, Bessie
Foote, Dode
Foote, L. K.
Foote, Mrs. L. K.
Ford, Ruth Meacham
Forness, Helen Hooley
Fortner, Alice
Fortner, Eugene

Fortner, Gretchen
Fortner, Hattie
Fortner, Stella
Foster, Helen
Foster, Marie
Foster, Mary
Fowler, Helen Adams
Frampton, Margaret
Franklin, Mrs. Wm.
Freeman, Libbie
Freer, Alma
Frisbee, Velma
Froats, Alma
Frymire, Carrie
Fuller, Cora
Fuller, Earl
Fuller, Luna
Fullerton, Margaret
Fulmer, Eva
Fulmer, Evelyn
Fulmer, Hattie
Fulnecky, Joseph

G

Gallup, Kittie Bellows
Gallup, Mary Sawyer
Gallup, Nellie Hooker
Galusha, Florence
Gamble, Cecil
Garthwaite, Rhea Springstead
Gathmann, Frances Parker
Geneaux, Alice Kemp
Gillen, Loraine Flesher
Glesk, Ruth MacFarland
Goding, Gladys
Goetz, Grace Russell
Goodnough, Belle
Gordon, Ruth
Grant, Richard Webb
Graybill, H. W.
Green, Theo
Greenhill, Mary
Griffin, Nellie
Groh, John G.
Gronette, Elizabeth
Grosbeck, Josephine
Colegrove
Grover, Gladys
Guenter, Ella

Guenter, Myra
Gutgsell, Mrs. Edythe

H

Hackett, Abbie R.
Hackett, James
Hackman, May
Hall, Beda Jackson
Hall, Cleoma
Hall, Elnora Grinolds
Hamilton, Mary
Hamilton, Paul
Hammel, Mabel
Hanawalt, J. R.
Hancock, Edythe
Hankin, Hazel
Hanson, Ole
Happle, Ivah
Harden, Laura W.
Harden, Mary Baxter
Hardy, Fred N.
Harmon, Maude Sullivan
Hart, Emma
Haskell, Belle
Hatch, Irene H.
Hauenstein, Violet Varcoe
Haynes, Vivian Meacham
Hazen, Myrtle
Hazlett, Fern
Heckman, O. H.
Hegquist, Alida Rehnberg
Hellings, Margaret Evans
Helmer, Bertha Hall
Hendryx, Lottie
Henninger, Edna Fessenden
Henretty, Margaret
Hepler, Eva May
Hermanson, Marie K.
Herter, Ruby Jenkins
Hevener, Mrs. John
Heysham, Hattie
Hickok, Carrie
Hickok, Julia
Hill, Ella Harris
Hillman, Edward B.
Hillman, Mattie
Hinkelman, Augusta
Hinman, Nina
Hitchcock, Rena C.

Hockenberry, W. W.
Holahan, Estella
Holcomb, Glenn
Holcomb, Lindy
Holden, Mrs. A. C.
Holden, Grace Cole
Holden, Lyle
Holland, B. B.
Holleran, Beatrice Fin
Holman, Jeanne
Holmes, Oral Jean Ha
Hooley, Anna
Hooley, Anna Marie
Hooley, Mary
Hooley, Helen
Horn, Phyllis
Horton, Ada
Horton, Elias
Horton, May
Hosley, Leona Clark
Houghton, Luella
House, Frances J.
House, Harry R.
Howard, June Abbey
Howe, Veva Wood
Huff, Maude
Hughes, Elner
Hughes, Joseph
Hughes, Julia
Hughes, Maggie
Hurlburt, Sara

I

Ingley, Genevieve
Ingraham, Mrs.
Ivory, Marcella

J

Jackel, Leda McDowell
Jaeger, Johanna
Jaeger, Katherine
Jenkins, Mary
Jenks, Avis Jordan
Johnson, Letha
Johnson, Marian Caske
Johnson, Ora Keeler
Johnson, Mrs. Oscar
Johnson, Royce Oliver

Johnston, Frances Griffey
Jones, Dr. Clifford V.
Jordan, James
Judd, Iyces S.
Judson, Ulrica W.
June, Leona Sawyer

K

Kahle, Anna T. Boudon
Kane, Bertha
Kanally, Athlia Kline
Kauffeld, Marie Stilwell
Kayler, Pearl
Keefe, Helen
Keeney, W. H.
Keiser, Edith
Kelley, Chas.
Keltz, Catherine
Kemp, Laurenza
Kendall, Effie Larabee
Kennedy, Mrs. Florence
Kennedy, John B.
Kershner, Wilma
Kibbie, Beatrice Weimer
Kidder, Norine
Kilgore, S. B.
Kincoide, Frances
Kindig, Mr.
King, Florence
Kinney, Esther Seyler
Kirke, Newton
Kirkpatrick, J. B.
Kleisath, Leona
Klesa, Lucille
Klett, Guy S.
Kline, Athalia
Klock, Elizabeth S.
Klyne, Thelma S.
Knapp, Jacqueline
Knapp, Lotus
Knapp, Naomi
Knight, Armina
Knight, Grace Church
Knowlton, Imelda E.
Kusner, Esther

L

Langdon, Florence Neefe
Lanks, H. L.

Larson, Edith
Larson, Grace Phalon
Lauer, Belle Lillibridge
Lawler, Anna M.
Lawler, Genevieve
Lee, Martha Neil
Leech, Mr.
Leffler, Wildemary
Lehman, Dora Chastain
Leitch, Cleo Tauscher
Lesslie, Anita H.
Lewis, Bertha Spencer
Lewis, Jessie Sawyer
Lewis, Naomi Simar
Licastro, Rose Asselto
Lillibridge, Chas. W.
Lillibridge, Flora Roys
Lillibridge, Nora
Lilly, Bessie
Lincoln, Gordon
Lincoln, Helen
Lindsey, Ruth Falk
Lindstrom, Maude Elston
Linke, Lena
Lithgow, Nellie
Losey, Marguerite
Lucas, Doris
Lundeen, Edythe
Lunden, Mona Meeker
Lundragen, Hannah
Lundragun, Cynthia
Lyman, Laura
Lyman, Stella H.
Lynch, Clyde C.
Lynch, Esther A.

M

MacDonald, W. E.
Madison, Ruth
Maglisceau, Albert S.
Maloney, Edith
Maloney, Mae
Maltby, Frank
Maltby, Lucy
Mangold, Mrs. John
Mangold, Mary
Manay, Ida V.
Manning, Mrs. Chas.
Manning, Elizabeth

Manning, Lettie
Mantz, Daphene Card
Marni, Archimedes
Marschner, H. A.
Marschner, John
Marsh, Agnes
Marsh, Marian
Marsh, Marie
Marshall, Emma S.
Martz, Claire Paul
Mason, Margaret
Matteson, Margaret Lyman
Mattison, Edna
Maul, Charles
Maxwell, Kittie
McCarey, Anna
McCloskey, Geneva Stone
McCord, Gladys Franklin
McCormick, Andrew
McCoy, Vivienne C.
McFadden, Jennie
McFadden, Marion
McFarland, Martha
McGregor, Mattie Frink
McGruder, Hortense Eckstrand
McIntyre, Grace Reynolds
McLafferty, Beulah
McLatchie, Naomi W.
McLaughlin, Hannah
McLaughlin, Mildred Woodward
McLean, Pauline Grabe
Mellinger, Bruce
Mentzer, Jane
Mercill, Myrta
Merrion, Mayme Sullivan
Michelitsch, Helen H.
Miller, C. M.
Miller, Katherine
Mitchell, Delphine Robbins
Mitchell, John E.
Monahan, Rose
Moore, Edith
Moore, Helen
Moore, Lottie
Moran, Anna Cotter
Moran, Bertha
Moran, Genevieve
Moran, Margaret
Moss, Lura Schoonover
Mott, Eva H.

Moyer, John
Mulholland, Lillian Splain
Mullin, Julia
Mullin, Mary
Mullin, Nellie
Mullin, Pearl Masterson
Murdock, Marguerite
Myers, Lucille Sheldon

N

Nadal, Henrietta
Nadolske, Hannah Dennin
Naegel, Florence Sullivan
Naegely, Ennah Olmstead
Naegely, Pauline
Neil, Martha
Nelson, Lulu Robbins
Nenno, Tereasa Kinney
Nichols, Gordon
Nichols, Leora Richards
Niles, Eva Taylor
Nolan, G. D.
Nordstrom, Aurora
Nordstrom, Ina C.

O

O'Brien, Alice
Oliver, Cecelia
Olmstead, Nina
O'Meara, Winifred
Ornsby, Ethel
Ostrander, Dorothy Fortner
Ostrander, Lois
Otto, Adelle Palmer
Owens, Esther

P

Panco, Ellen Webb
Parkinson, Beatrice
Parsen, Nina
Pearsall, Belva
Pearsall, H. S.
Peck, Grace Lyman
Peck, Virginia Mix
Pelegrino, Peter M.
Pelton, Alzina Grinolds
Percival, Mabel Reed

Peterson, Eva
Petrie, Hazel Metz
Pfeil, Harriet
Pfeil, Ruth Case
Phalin, Katherine Merkel
Phalin, Eleanor Snyder
Phalon, Genevieve Splain
Phillips, Mae Neely
Pierce, Beatrice Acre
Pizor, Jane Colcord
Poole, Raymond
Porter, Katherine
Posner, Sadie
Potter, Nellie
Prather, M. Lucille
Press, Marilyn
Price, Alene McGill
Prince, Carrie G.
Proctor, Lydia

R

Rackish, Frank
Rather, Evelyn Eckstrand
Rathgaber, Lewis
Razey, Grace
Reed, Gladys
Reed, Jennie
Reeder, Lena
Rehnborg, Gertrude H.
Remaley, Ruth
Rennells, Elsie
Rennells, Mabel Cool
Rennells, Myrtle Reese
Rhodes, Edna
Richards, Gertrude
Richards, Rhea
Ripple, Ruth Lawson
Ritchie, Norma H.
Rittsburg, Leola
Robbins, Olive
Robbins, Ruth Shepard
Roberts, L. E.
Robinson, Edith
Robson, Isabella
Robson, Pauline Larabee
Roderick, Donald
Roderick, Ruth
Rogers, Rachel
Root, Nida

Rosetti, Hazel Woodwa
Rowles, John J.
Rowley, Wynona R.
Royce, Lillie
Roys, Dora Dolley
Roys, Edna Tefft
Roys, Nellie
Rudzinsky, Frank
Rupert, Edna Grover
Rutherford, Rose

S

Saiers, Luella Welsh
Sampson, Beatrice
Sampson, Betty R.
Sawyer, Laura Austin
Sawyer, Lorinda Eddy
Schiebner, Tessie F.
Schlosser, Leo T.
Schutt, Agnes Burt
Schuyler, Margaret
Scott, Monte
Seaman, H. E.
Seldon, Mrs. Jay
Seymour, Louisa H.
Seymour, May
Shaffer, Flora Metcalf
Shane, Minnie B.
Shaner, Jennie Simar
Shattuck, Gertrude
Shelley, Marie Thoren
Shepherd, Lena
Sherman, Mabel Freer
Shurtz, Maude
Shurtz, Ora H.
Simar, Emma
Simpson, Lulu
Simpson, Mary
Skelton, Albert
Skoog, Inez
Sloan, Elizabeth
Smith, Anna
Smith, Gladys Meacham
Smith, Idahlia Pomeroy
Smith, Jennie
Smith, L. L.
Smith, Mary McCormick
Snyder, Lehman
Snyder, Ora Lillibridge

THE BUILDERS

PORT ALLEGANY UNION HIGH SCHOOL

Architect

Raymond Viner Hall, R.A., A.I.A.
Port Allegany, Pennsylvania

Consulting Engineer

Franklin E. Sturgeon, Registered Engineer

Building Contractors

General Contractor—Paul W. Glenn, Inc., Sharon, Penna.
Electrical Contractors—Hull Electric Co., Bradford, Penna.
—Catlin Electric Co., Port Allegany, Penna.
Heating & Ventilating Contractors—Sans Corporation, Jamestown, N.Y.
—Olean Plumbing & Heating Co., Olean, N.Y.
Plumbing Contractor—David N. Brown, Inc., Bradford, Penna.
Furniture & Equipment—Standard Equipment Co., Olean, N.Y.

COST AND CONSTRUCTION DATA

Building Cost per Student	\$1,508.00
Building Cost per Square Foot	13.56
Number of Pupils (at time of planning)	638
Number of Pupils at Present Time	585
Area of Building	70,960 sq. ft.
Area per Student	111 sq. ft.

TOTAL COST OF PROJECT

Construction Contracts including Athletic Field, Track and Fixed Equipment	907,994.00
Architect's Fee	54,486.00
Loose Fixtures and Equipment	30,000.00
Contingent Fees and Authority Incidentals	50,002.00
Total Project	\$1,042,482.00

Sonnekalb, Donna Fee
Splain, Mabelle
Springer, Marie
Southard, John B.
Stahl, Katherine
Staiger, Henry W.
Stearns, Clayton
Stearns, Laura Meacham
Stephens, Kathleen
Stevens, Mary
Stevenson, Jennie
Stewart, Gladys Yentzer
Stilwell, Eva Webb
Stone, Anna B.
Stonemetz, Margaret S.
Strang, Leonard
Strang, Reva Holden
Strang, Russell
Strawn, Claire K.
Strick, Josephine Conrad
Stromberg, Robert
Sullivan, Helen
Swanson, Jean Marie
Swanson, Marian
Swartz, Grace Shelly
Swartz, Lena Gee
Sweeney, Clara Fortner
Sweeting, Grace
Sweitzer, M. A.
Sweitzer, Marian Loveland

T

Tallant, Mabel
Tate, Stella
Taylor, Clara
Taylor, Dora Jane
Taylor, Genevieve
Taylor, Hattie
Taylor, Ira
Teater, Kathleen
Terry, Miriam
Thayer, Jane Wilkins
Thayer, Lazelle

Thompson, Clyde
Thompson, Oral
Thoren, Mildred
Todd, Matilda Reidy
Townsend, Fern F.
Townsend, Louise
Tregoe, Jean Skaden
Tronetti, Margaret Kennedy
Tubbs, Ardella Cooper
Tubbs, Marguerite S.
Tubbs, Ruth

V

Valentine, Mattie Burt
Valsing, Mary Simpson
Van Eppen, Iva Lane
VanPelt, Kathryn
Ventres, Florence J.

W

Wagner, Maude Downs
Waite, Ethel P.
Wakely, Clinton
Walizer, Hyle
Walker, Edith
Walters, Rose King
Wamsley, Mabel
Wandover, Harriet Tuttle
Ward, Anna Buckley
Ward, Charles Carrol
Ward, Eleanor
Warren, Shirley
Wassen, C. W.
Watkins, Emily
Watkins, Forest
Watkins, Lesslie
Watson, Mildred
Weaver, Laura Lyman
Weimer, Carol
Weipper, Verna
Weirmiller, Avah

Wells, Cenyth
Welsh, Josephine
Wennerstrom, Ila Meeker
Wertz, David
White, Alton
White, Molly
White, Myra
Wicks, Elwood
Wicks, Florence
Wilcox, Velma
Wilcox, William
Williams, Marcella Burt
Williams, Minnie
Willis, Josie F.
Wilson, H. M.
Wilson, Jessie
Wilson, Joseph C.
Wilson, L. Mae
Winship, Donald
Winship, Olive
Winsor, Matilda Abbey
Winter, C. L.
Witter, Florence R.
Witter, Kathryn T.
Wolfe, Ruth S.
Wolfkill, Edith A.
Wood, Kate
Wood, Mary
Wright, Helen
Wright, Sara E.
Womeldorf, Paul D.
Wood, Mary

Y

Yentzer, Edwin
Yentzer, Marie
Young, Robert

Z

Zawaski, Sadie
Zawaski, Thomas
Zundel, Ruth

APPRECIATION

We wish to express our grateful appreciation to the following for contributing historical data used in this brochure.

Superintendent R. P. Barnhart	Mrs. Lewis Knapp
Superintendent C. W. Lillibridge	Mrs. Mary Gallup
Superintendent A. P. Akeley	Mrs. Rose K. Walters
Mrs. Bertha H. Helmer	Mr. L. L. Smith
Mrs. Geneva Grandin	Mr. Harold Baker
Mr. C. F. Boller	

Most pictures courtesy of Pittsburgh-Corning Corporation
Vincent Bizzaro - Photographer

Committee for Dedication Program:

School Authority

Guy Nelson - Co-Chairman

Board of Education

Henry Tauscher, Co-chairman
Mrs. Eleanor Michelitsch
Mrs. Dorothea Goodrich
James Isherwood, Jr.
Ralph Burdick

Faculty Committee for Book Publication

Mr. Clyde C. Lynch, Chairman	
Mrs. Rose Licastro	Mr. Raymond Poole
Mrs. Hanna Nadolske	Mr. Frank Rackish
Mrs. Loraine Gillen	Mr. Robert Christensen
Mrs. Ila Wennerstrom	Mr. Edison O. Bates